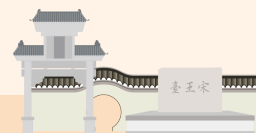


KOWLOON CITY INFORMATION FOR ELDERLY & DISABLED PERSONS CARER SUPPORT



DISTRICT ELDERLY COMMUNITY CENTRE

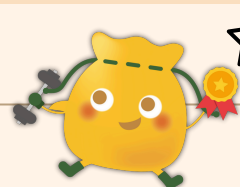


Name of Service Unit	Address	Phone No.	Fax No.
Hong Kong Sheng Kung Hui Welfare Council Limited S.K.H.Holy Carpenter Church District Elderly Community Centre	LG/F & G/F (Portion), No. 1 Dyer Avenue, Hung Hom, Kowloon	3960 4306	2356 1997
Hong Kong Sheng Kung Hui Welfare Council Limited H.K.S.K.H. Lok Man Alice Kwok Integrated Service Centre	G/F, Block H, Lok Man Sun Chuen, To Kwa Wan, Kowloon	2333 1854	2330 7589
Tung Wah Group of Hospitals Wong Cho Tong District Elderly Community Centre	G/F, TWGHs Wong Cho Tong Social Service Building, No. 39 Sheung Shing Street, Ho Man Tin, Kowloon	2194 6566	2713 4377



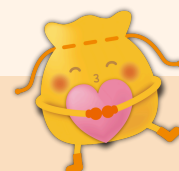
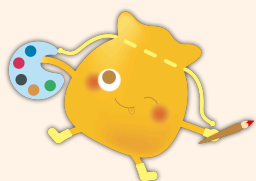
SELF FINANCING UNIT

Kowloon City Baptist Church Social Services CityNET	G/F, 19 Fu Ning Street, Kowloon City	2383 1256	2383 1266
--	--------------------------------------	-----------	-----------



NEIGHBOURHOOD ELDERLY CENTRE

Name of Service Unit	Address	Phone No.	Fax No.
Yang Memorial Methodist Social Service Oi Man Neighbourhood Elderly Centre	Units 401- 404 & 509-511, Kar Man House, Oi Man Estate, Ho Man Tin, Kowloon	2715 8677	2761 4144
Heung Hoi Ching Kok Lin Association Buddhist Ho Wong Cheong Po Neighbourhood Elderly Centre	G/F, No. 115 Tam Kung Road, To Kwa Wan, Kowloon	2713 8380	2713 3884
Yan Chai Hospital Ng Wong Yee Man Neighbourhood Elderly Centre	G/F, No. 55 Hau Wong Road, Kowloon City, Kowloon	2718 8331	2718 8336
Chung Sing Benevolent Society Tan Siu Lin Neighbourhood Elderly Centre	Shops 9-13 & 27, G/F, Wing Fai Mansion, No. 52 Wing Kwong Street, Hung Hom, Kowloon	2333 0773	2333 0375
Hong Kong Family Welfare Society Kowloon City Centre for Active Ageing	1/F, Block 2, Harmony Garden, 55-61 Kowloon City Road, To Kwa Wan, Kowloon	2711 2488	2711 0925
Po Leung Kuk Wan Lam May Yin Shirley Neighbourhood Elderly Centre	Shop No. A206, 2/F, Ching Long Shopping Centre, No. 12 Muk Hung Street, Kowloon City, Kowloon	2897 6608	2896 5878
New Life Church of Christ. Ho Man Tin Neighbourhood Elderly Centre	Unit 11, G/F, King Man House, Ho Man Tin Estate, Ho Man Tin, Kowloon	2760 7111	2760 7140
Hong Kong Mutual Encouragement Association Limited Cheng Yu Tung Neighbourhood Elderly Centre	M/F, Whampoa Plaza, Site 8, Whampoa Garden, Hung Hom, Kowloon	2330 9682	2330 9001
Fo Guang Shan International Buddhist Progress Society (Hong Kong) Limited Law Chan Chor Sze Neighbourhood Elderly Centre	1/F, Polly Court, No. 53 Bulkeley Street, Hung Hom, Kowloon	2333 7877	2333 7677



DISTRICT SUPPORT CENTRE FOR PERSONS WITH DISABILITIES

Name of Service Unit	Address	Phone No.	Fax No.
SideBySide Vitality Place - Hung Hom	Unit 11B, 9/F, Tower B, Hunghom Commercial Centre, 37 Ma Tau Wai Road, Hung Hom	2332 5332	2402 3588
Hong Kong Blind Union Oi Man Services Centre	Unit 621-624, Kar Man House, Oi Man Estate, Ho Man Tin, Kowloon	2760 0100	2762 1635
Caritas - Hong Kong Caritas Blissful Life Parents Resource Centre	Unit 09, 11/F, Hunghom Commercial Centre A, 37-39 Ma Tau Wai Road, Hung Hom, Kowloon	3619 3977	3614 5935
Hong Kong Lutheran Social Service, the Lutheran Church - Hong Kong Synod Limited Homantin Lutheran Yung Lok Centre	Shop 201& 203, 2/F, U PLACE, 68 Kowloon City Road, To Kwa Wan	2871 2200	2871 2822



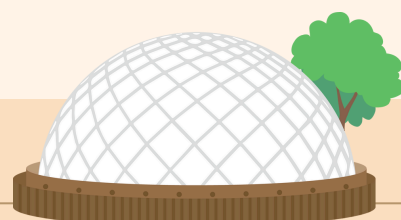
Updated Date: 2025-02-27



YAU TSIM MONG

INFORMATION FOR ELDERLY & DISABLED PERSONS

CARER SUPPORT



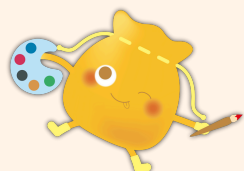
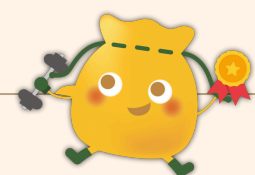
DISTRICT ELDERLY COMMUNITY CENTRE

Name of Service Unit	Address	Phone No.	Fax No.
The Salvation Army Yaumatei Multi-service Centre for Senior Citizens	3/F, No. 11 Wing Sing Lane, Yau Ma Tei, Kowloon	2332 0005	2771 6464
Mongkok Kai-Fong Association Limited Chan Hing Social Service Centre	G/F & 1/F, No. 45 Fuk Tsun Street, Tai Kok Tsui, Kowloon	2395 3107	3427 3299



NEIGHBOURHOOD ELDERLY CENTRE

Name of Service Unit	Address	Phone No.	Fax No.
Yang Memorial Methodist Social Service Yau Tsim Neighbourhood Elderly Centre	Room 103, 1/F, No. 1 Austin Road West, Tsim Sha Tsui, Kowloon	3149 4123	3149 4033
Asia Women's League Ltd. Yaumatei Neighbourhood Elderly Centre	4/F, Henry G Leong Yau Ma Tei Community Centre, No. 60 Public Square Street, Yau Ma Tei, Kowloon	2384 8465	2385 3804
Baptist Oi Kwan Social Service Chan Tak Sang Memorial Neighbourhood Elderly Centre	Unit A, 1/F, Prosperity Court, No. 168 Lai Chi Kok Road, Kowloon	2390 6574	2396 3973
Sik Sik Yuen Ho Wong Neighbourhood Centre for Senior Citizens	1/F, King Centre, Nos. 23-29 Dundas Street, Mong Kok, Kowloon	2625 1212	2625 1123
Po Leung Kuk Lo Yau Yuk Sheung Neighbourhood Elderly Centre	3/F, Kelly Commercial Centre, 570-572 Nathan Road, Yau Ma Tei, Kowloon	2782 0220	2782 0115
Mongkok Kai-Fong Association Limited Kowloon Chamber of Commerce Centre for the Elderly	Shop 399, Level 3, Grand Century Place, No. 193 Prince Edward Road West, Mong Kok, Kowloon	2264 3131	2264 3132
The Salvation Army Hoi Lam Centre for Senior Citizens	1/F, Hoi Yu House, Hoi Fu Court, No. 2 Hoi Ting Road, Mong Kok, Kowloon	2148 1481	2626 9996
International Women's League Ltd. International Women's League Neighbourhood Elderly Centre	2/F & Units 609- 610 on 6/F, Boss Commercial Centre, No. 28 Ferry Street, Yau Ma Tei, Kowloon	2782 2237	2782 2839
Tsim Sha Tsui District Kai Fong Welfare Association Tsim Sha Tsui District Kai Fong Association Neighbourhood Elderly Activities Centre	Shops 5-7, G/F, Hang Bong Commercial Centre, No. 28 Shanghai Street, Kowloon	2302 0727	2302 0528
Asian Outreach Hong Kong Ltd. Island Harbourview Elderly Club	UG/F, Olympian City (I), No. 11 Hoi Fai Road, Tai Kok Tsui, Kowloon	2928 4008	2789 1873



DISTRICT SUPPORT CENTRE FOR PERSONS WITH DISABILITIES

Name of Service Unit	Address	Phone No.	Fax No.
Hong Kong Lutheran Social Service, the Lutheran Church - Hong Kong Synod Limited Lutheran Bliss District Support Centre (Yau Tsim Mong)	Unit 802 & 810, New Kowloon Plaza, 38 Tai Kok Tsui Road, Kowloon	3709 6188	3709 6177
New Life Psychiatric Rehabilitation Association The Wellness Centre (Yau Tsim Mong)	G/F - 1/F, Flourish Mansion, 9 Cheung Wong Road, Mong Kok, Kowloon	2977 8900	3552 5353
Heep Hong Society Hoi Fu Parents Resource Centre	1/F, Hoi Yan House, Hoi Fu Court, Hoi Wang Road, Mongkok, Kowloon	2777 5588	2784 1194



Updated Date: 2025-02-18